

## Tilt Plate

### Purpose

To monitor changes in the tilt of a structure.

Tilt plate is also commonly known as tilt meter.

### Application

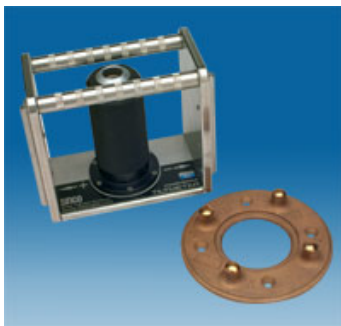
1. Monitor changes in the tilt of a structure.

Changes in tilt can occur when nearby construction activity affects the ground that supports the structure.

Activities such as excavation, tunneling, or dewatering may cause settlement or lateral deformation.

Changes in tilt are also caused when a load is applied to a structure.

2. Monitor rotation or angular distortion of columns, walls and beams caused by tunneling, excavation or soil compaction works.



*Tilt Plate Monitoring*



*Tiltplate installed on a MRT column*



*Tilt Plate*



*Monitoring Tilt Plate*